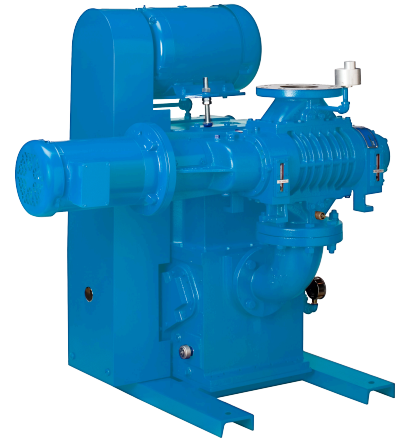


## Mechanical Booster Vacuum Pump Systems

### Models

CB7215    CB7230    CB7250

Kinney® Compact Booster Systems combine the features of Kinney KT™ Pumps and Integral Drive Boosters into a space efficient package capable of continuous high pumping capacity down to 10 microns. They are suitable for use in vacuum furnace, vacuum coating, sputtering, space simulation, and other applications.



### Features

- High pumping capacity
- Compact envelope
- Quiet, vibration-free
- Water-cooled for low operating temperature
- Tough, durable pumps

### Specifications

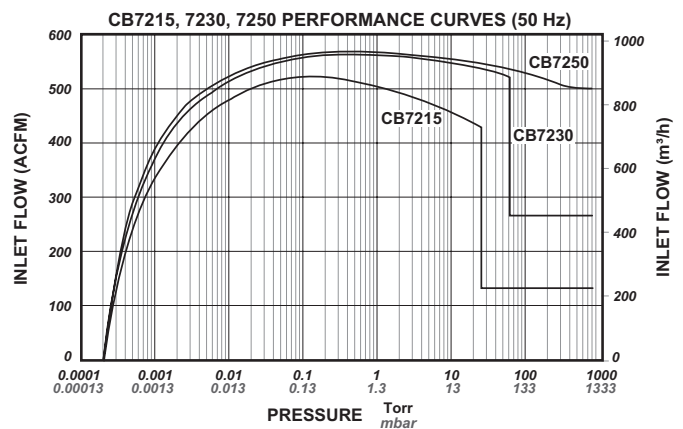
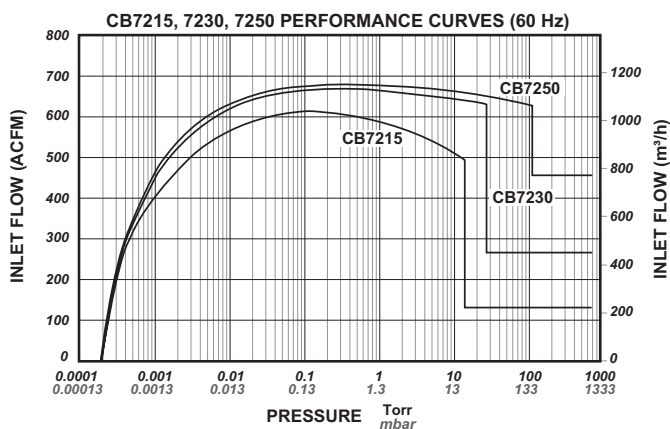
| SYSTEM MODEL | Hz | CIP <sup>1</sup> (TORR) | MAXIMUM COP <sup>2</sup> (TORR) | BOOSTER MODEL | DISPLACEMENT CFM / m <sup>3</sup> /h | HP/kW   | PUMP MODEL | DISPLACEMENT CFM / m <sup>3</sup> /h | HP/kW     |
|--------------|----|-------------------------|---------------------------------|---------------|--------------------------------------|---------|------------|--------------------------------------|-----------|
| CB7215       | 60 | 15                      | 15                              | KMBD-720C     | 720 / 1220                           | 5 / 3.7 | KT-150     | 150 / 250                            | 7.5 / 5.6 |
|              | 50 | 20                      | 20                              |               |                                      |         |            |                                      |           |
| CB7230       | 60 | 30                      | 30                              | KMBD-720C     | 720 / 1220                           | 5 / 3.7 | KT-300     | 300 / 500                            | 15 / 11   |
|              | 50 | 60                      | 60                              |               |                                      |         |            |                                      |           |
| CB7250       | 60 | 100                     | *                               | KMBD-720C     | 720 / 1220                           | 5 / 3.7 | KT-500     | 500 / 850                            | 30 / 22   |
|              | 50 | 760                     | 760                             |               |                                      |         |            |                                      |           |

<sup>1</sup> CIP = Cut-in Pressure

<sup>2</sup> COP = Continuous Operating Pressure

\*Limited by motor HP

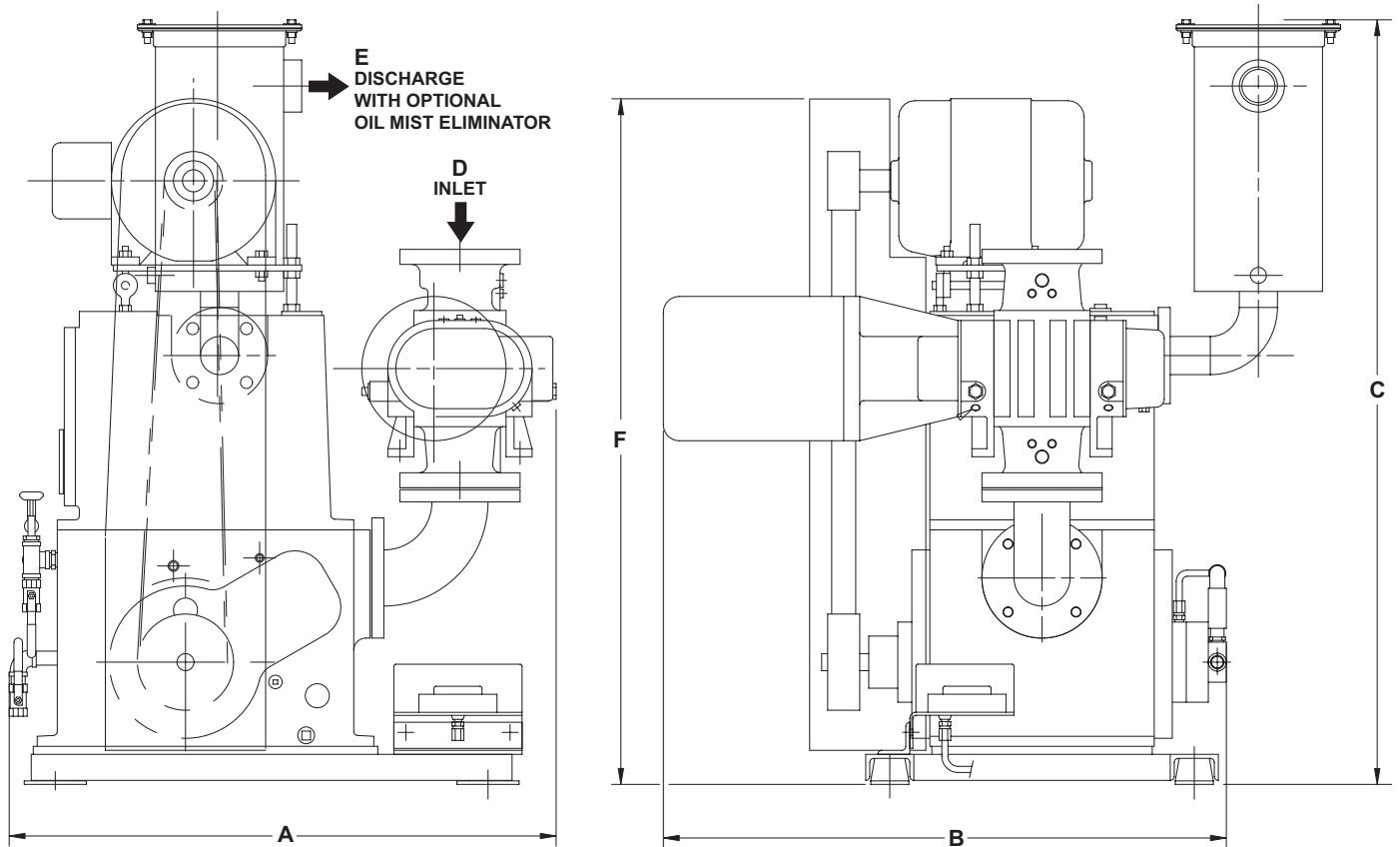
### Typical Pumping Speed Curves



## Dimensions

Values shown are approximate and should not be used for construction.  
 Certified drawings are available through your local Tuthill Vacuum & Blower Systems Sales Professional.

## Models CB7215, CB7230, CB7250



| MODEL  | A                | B                | C                | D INLET | E DISCHARGE | F                | G                |
|--------|------------------|------------------|------------------|---------|-------------|------------------|------------------|
| CB7215 | 36 / <b>914</b>  | 45 / <b>1143</b> | 52 / <b>1321</b> | 4" FLG  | 2" NPT      | 44 / <b>1118</b> | 51 / <b>1295</b> |
| CB7230 | 42 / <b>1067</b> | 48 / <b>1219</b> | 58 / <b>1473</b> | 4" FLG  | 3" NPT      | 58 / <b>1473</b> | 57 / <b>1448</b> |
| CB7250 | 55 / <b>1397</b> | 47 / <b>1194</b> | 72 / <b>1829</b> | 4" FLG  | 4" FLG      | 62 / <b>1575</b> | 60 / <b>1524</b> |

### Standard Configuration

- Integral Drive Booster
- Kinney® KT™ Pump
- Dual Voltage 3/60/230-460V TEFC Motors
- Pressure Switch
- Overtemperature Switch
- Steel Base with VibraMounts

### Options

- Oil Mist Eliminator
- Suction Flexible Connector
- Cooling Water Solenoid Valve
- Motor Controls
- Air Cooling Systems

Your Local Tuthill Vacuum Blower Systems Sales Professional:



**Tuthill Vacuum & Blower Systems**  
 4840 West Kearney Street  
 Springfield, Missouri USA 65803-8702  
 o 417.865.8715 800.825.6937 f 417.865.2950  
[tuthillvacuumblower.com](http://tuthillvacuumblower.com)

